



Education and Children's Services Scrutiny Board (2)

Time and Date

2.00 pm on Thursday, 5th November, 2015

Place

President Kennedy School and Community College, Rookery Lane, Coventry, CV6 4GL

Public Business

1. **Apologies and Substitutions**
2. **Declarations of Interests**
3. **Minutes** (Pages 3 - 8)
 - a) To agree the minutes of the meeting held on 8th October, 2015
 - b) Matters Arising
4. **Y6-Y7 Transition - President Kennedy Bridge Project**

Presentation from President Kennedy School and Community College
5. **Headlines on achievement of pupils at Early Years Foundation Stage, Key Stage 2, Key Stage 4, Key Stage 5 and Post 16 participation for the academic year 2014/15** (Pages 9 - 26)

Briefing Note of the Executive Director for People
6. **Improvement Board Progress Report** (Pages 27 - 38)

Briefing Note of the Executive Director for People
7. **Work Programme** (Pages 39 - 46)

Briefing Note of the Scrutiny Co-ordinator
8. **Any Other Business**

Any other items of business which the Chair decides to take as matters of urgency because of the special circumstances involved.
9. **Meeting Evaluation**

To discuss and evaluate the effectiveness of the meeting.

Private Business

Nil

Chris West, Executive Director, Resources, Council House Coventry

Wednesday, 28 October 2015

Notes: 1) The person to contact about the agenda and documents for this meeting is Michelle Rose, Governance Services, Council House, Coventry, telephone 7683 3111, alternatively information about this meeting can be obtained from the following web link: <http://moderngov.coventry.gov.uk>

2) Council Members who are not able to attend the meeting should notify Michelle Rose as soon as possible and no later than 1.00 p.m. on 5th November, 2015 giving their reasons for absence and the name of the Council Member (if any) who will be attending the meeting as their substitute.

3) Scrutiny Board Members who have an interest in any report to this meeting, but who are not Members of this Scrutiny Board, have been invited to notify the Chair by 12 noon on the day before the meeting that they wish to speak on a particular item. The Member must indicate to the Chair their reason for wishing to speak and the issue(s) they wish to raise.

Membership: Councillors N Akhtar, S Bains, L Bigham, S Hanson (Co-opted Member), K Jones (Co-opted Member), D Kershaw (By Invitation), J Lepoidevin, C Miks, K Mulhall, M Mutton (Chair), H Noonan, J O'Boyle, R Potter (Co-opted Member), E Ruane (By Invitation), P Seaman and S Thomas (By Invitation)

Please note: a hearing loop is available in the committee rooms

If you require a British Sign Language interpreter for this meeting OR if you would like this information in another format or language please contact us.

Lara Knight/Michelle Rose

Telephone: (024) 7683 3237/3111

e-mail: lara.knight@coventry.gov.uk michelle.rose@coventry.gov.uk

Coventry City Council
Minutes of the Meeting of Education and Children's Services Scrutiny Board (2)
held at 2.00 pm on Thursday, 8 October 2015

Present:

Members: Councillor M Mutton (Chair)
Councillor N Akhtar
Councillor S Bains
Councillor L Bigham
Councillor C Miks
Councillor J Mutton (substitute for Councillor P Seaman)
Councillor H Noonan
Councillor J O'Boyle
Councillor D Skinner (substitute for Councillor J Lepoidevin)

Co-Opted Members: Mrs S Hanson

Cabinet Member and Deputy Cabinet Member: Councillor D Kershaw
Councillor S Thomas

Employees (by Directorate):

Y Corden, People Directorate
C Dutton, People Directorate
S Giles, People Directorate
A Harley, People Directorate
G Holmes, Resources Directorate
M Pickles, People Directorate
M Rose, Resources Directorate
T Savill, Resources Directorate
A Simpson, People Directorate

Apologies: Councillor E Ruane
K Jones and R Potter

Public Business

20. Declarations of Interests

There were no Disclosable Pecuniary Interests.

21. Minutes

The minutes of the meeting held on 10th September, 2015 were approved.

The Scrutiny Board discussed a number of Matters Arising from the last meeting:

- Further to Minute 14/15 'minutes from the previous meeting' officers were writing a report following discussions with officers at Birmingham City Council regarding Support to School Governors.

- Further to Minute 16/15 'Adoption Service Annual Report' Members noted that 52% of children over 5 years old in care were in long term foster placements.

22. **Quality Assurance - Children's Placements**

The Scrutiny Board discussed a briefing note of the Executive Director for People, which provided detail about quality assurance in children's placements.

The report noted that Coventry had approximately 600 children in the care of the local authority. The majority of these children live either with foster carers or in residential homes. The Council were committed to ensuring that it commissioned or delivered the best quality services possible within available resources. The report outlined how the City Council ensured that the placements it procured for looked after children provided good quality care and value for money.

The report detailed types of placements, location of placements, cost of placements, inspection of placements including Ofsted, the role of commissioning and the procurement process and the voice of the child. Appended to the report was a location map of placements in the UK and a case study of the quality assurance process.

The Board discussed the report with the Cabinet Member for Education, the Deputy Cabinet Member for Education and officers. The Board raised the following queries:

- Time taken to report to the Council on findings during visits
- Announced or unannounced visits
- Working with partners
- Placements a long way from Coventry
- Working with other local authorities
- Cost and quality of placements
- Internal and external placements
- Voice of the Child participation

Officers agreed to investigate whether the Regulation 44 visits were announced to the home prior to the inspection.

RESOLVED that the Scrutiny Board recommend that:

- 1) The Cabinet Member's for Education and Children and Young People request that, the new Executive Director for People review Looked After Children Residential Care and Education and discuss issues with neighboring local authorities', in order to reduce the number of placements more than 20 miles away.**
- 2) A letter be sent from the Scrutiny Board to the Minister for Children**

23. **Early Learning for Two Year Old Funding**

Further to minute 27/14 the Scrutiny Board discussed a briefing note of the Executive Director for People, which provided a progress report about Department for Education (DfE) targets to ensure the provision of early education places for the 40% most disadvantaged two year olds in the city.

The eligibility for delivery of an early learning place was set nationally, with some flexibility for local authorities to set local criteria. From September, 2014 the guidance was updated and the programme was extended so that 40% of eligible 2 year olds would receive up to 15 hours of funded early learning a week.

National criteria had also been extended and as well as the free school meals eligibility criteria and a child in the care of the Local Authority (LAC) the following were also now eligible; Benefits (Working Tax Credit Income), Special Educational Needs, Children with Disabilities and children who had been adopted. Local criteria included, children subject to a Child in Need or Child Protection Plan or a Common Assessment Framework (CAF). The report included targets and numbers of places being used, further work to expand provision in the city and target marketing to eligible families. Appended to the report was statistical neighbour take- up and west midlands take up.

The Board discussed the report with the Cabinet Member for Education, the Deputy Cabinet Member for Education and officers. The Board raised the following queries:

- Targeting marketing
- Improving outcomes and evaluating impact
- Barriers to increasing places
- Challenges to increasing participation
- Ofsted rating of Early Years settings

The Board requested further detail about;

- i) barriers to creating Early Years places and what was being done to address the barriers
- ii) the number of Early Years settings which were assessed by Ofsted as requiring improvement or inadequate

RESOLVED that the Scrutiny Board requested:

- a) a briefing note with further detail about barriers and assessment be provided**
- b) a progress report next municipal year**
- c) the Board look in more detail at the Early Intervention Policy**

24. Universal Infant Free School Meals/Pupil Premium Update

Further to minute 43/14 the Scrutiny Board discussed a briefing note of the Executive Director for People, which provided an update on progress made with the local implementation of Universal Infant Free School Meals (UIFSM) and the impact on the Pupil Premium.

The 2014 Children and Families Act placed a legal duty on state-funded schools in England, including academies and free schools, to offer a free school meal (FSM) to all pupils in reception, year 1 and year 2 from September 2014.

Capital funding was paid to local authorities in April 2014 and was subsequently allocated to all 82 eligible schools on a formulaic basis to assist in meeting the costs of, for example, kitchen refurbishment, new catering equipment and utensils. All Coventry primary schools were able to deliver the entitlement from 1st September 2014, although there were challenges for a small number of schools, particularly where major capital works were undertaken.

A Pupil Premium (PP) fund was paid to schools for several different groups of children including:

- Pupils who have been eligible for free school meals at any census point over the previous six years (currently paid at £1,320 per primary pupil and £935 for secondary pupils);
- Pupils who are in care or have left care (currently paid at £1,900 per primary or secondary pupil);
- Pupils classified as a 'service child' or in receipt of a child pension from the Ministry of Defence (currently paid at £300 per pupil); and
- More recently an Early Years Premium has been introduced for disadvantaged three and four year olds receiving free pre-school education providing up to an additional £300 a year for each eligible child.

The introduction of UIFSM removed the incentive for parents who qualify financially for FSM to make an application and as a result schools had experienced some loss of Pupil Premium funding.

The Board discussed the report with the Cabinet Member for Education, the Deputy Cabinet Member for Education and officers. The Board raised the following queries:

- ways to improve accessing Pupil Premium funding
- allocation of Capital Funding
- concern about the stigma associated with free school meals
- reasons parents opt-out of free school meals

Officers agreed to look at promotion of the free school meal offer to privately and social rented providers. Officers also agreed to make amendments to the FSM/Pupil Premium application form to apply to children eligible for PP but not FSM.

RESOLVED that the Scrutiny Board requested a review to look into why 15-20% of eligible children are not taking up the free school meal offer.

25. **Work Programme**

The Board noted the work programme and the additional joint meeting with Health and Social Care Scrutiny Board (5) on 25th November, 2015 to consider Child and Adolescent Mental Health Service (CAMHS).

26. **Any Other Business**

Councillor M Mutton reported that Members were invited to Health and Social Care Scrutiny Board (5) on 3rd Nov for the consideration of the Annual Report of the Director of Public Health which would have a focus on children and young people.

(Meeting closed at 4.00 pm)

This page is intentionally left blank



Coventry City Council

Briefing note

To Scrutiny Board 2

Date 5th November, 2015

Subject

Coventry Education Performance

Headlines on the achievement of pupils at Early Years Foundation Stage, Key Stage 2, Key Stage 4, Key Stage 5 and Post-16 participation for the academic year 2014/15

1 Purpose of the Note

1.1 To update members on Coventry's performance on the following:

- Early Years Foundation Stage Profile
- Key Stage 2
- Key Stage 4
- Key Stage 5
- Post-16 participation in education, employment and training
- Ofsted

1.2 The accompanying presentation summarises the education successes 2014/15 and key priorities for the 2015/2016 academic year. The presentation also includes information on the Ofsted Framework for the inspection of local authority arrangements for supporting school improvement.

2 Recommendations

2.1 Members have been provided with the results to give them an opportunity to comment and/or raise questions.

2.2 Members are asked to consider the implications for corporate leadership and strategic planning.

3 Information/Background

The provisional results for the Early Years Foundation Stage Profile (EYFSP), Key Stage 2, Key Stage 4 and Key Stage 5 have been published by the Department for Education (DfE).

At the time of writing, headline data is available for all local authorities across England and allows for comparisons to be made with Coventry's statistical neighbours, the West Midlands region and performance seen nationally in state-funded schools

across England. Pupils who are admitted from overseas within the last two years of the completion of their key stage and for whom English is not their first language are removed from final published data. It should be noted that the 2015 provisional data presented in this briefing includes all these pupils. Therefore, it is expected that the final Coventry City profile will improve.

Comparisons with statistical neighbours have been included where possible. The use of statistical neighbours is ideal since it allows us to compare our performance with other local authorities who share many of the characteristics present within Coventry. These include such aspects as the proportion of children entitled to Free School Meals, similar population demographics and the proportion of children who are defined as non-White British.

For the first time in 2015 provisional GCSE results have been made available in mid-October so parents choosing a secondary school for their child are able to use them to finalise their choices. Previously, the data was only shared with schools. It is part of the government's drive to improve transparency, helping parents hold schools to account while allowing heads and teachers to highlight their achievements.

Further information on how to access school-level data is available in Section 9 – References.

**Kirston Nelson, Director Education, Libraries and Adult Learning
People Directorate**

Early Years Foundation Stage

Teacher assessments of children at the end of the reception year at all primary schools are conducted according to the Early Years Foundation Stage Profile (EYFSP).

The EYFSP is conducted across all children at the end of the reception year and should assist in supporting the smooth transition of pupils into a Key Stage 1 programme of study. The EYFSP has been designed to assist both teachers and parents in informing them about their child's development against the early learning goals.

The new profile in 2013 made changes to the way in which children are assessed at the end of the EYFS and requires teachers to decide upon a 'best-fit' assessment when judging whether or not a child is seen to be 'emerging', 'expected' or 'exceeding' against all of the 17 Early Learning Goals.

Definition of a 'Good Level of Development'

The number and proportion of children achieving at least the expected level within the three prime areas of learning: communication and language, physical development and personal, social and emotional development and the early learning goals within the literacy and mathematics areas of learning.

Coventry's performance at the EYFSP in 2014

- In 2015, 64% of children achieved a 'good level of development', compared with 66% nationally

West Midlands and Statistical Neighbours

- The average rise seen across the West Midlands was 6%
- The average rise seen across our statistical neighbours was 5% compared with a 4% rise in Coventry
- Coventry is placed 5th amongst our statistical neighbours in 2015

Table 1: Percentage of children achieving a good level of development in Foundation Stage Profile

Statistical Neighbours		2013	2014	2015
357	Tameside	41.8	52.2	57.8
831	Derby	40.9	51.3	60.4
335	Walsall	46.3	53.3	60.8
874	Peterborough	46.7	59.2	61.0
350	Bolton	47.6	54.2	61.2
383	Leeds	51.3	58.0	61.8
331	Coventry	55.4	59.6	63.9
373	Sheffield	51.0	59.5	64.9
852	Southampton	50.8	61.8	66.1
851	Portsmouth	54.7	64.7	68.6
887	Medway	57.1	64.5	70.7
Statistical Neighbours		48.8	57.9	63.3
970	England	51.7	60.4	66.3

		Trend	Change from previous year	National Rank
31	Coventry	↑	4.30	104
984	West Midlands	↑	5.90	
970	England	↑	5.90	

2. Key Stage 2

Key Stage 2 and national expectations

All pupils across England receive national curriculum assessments at the end of Key Stage 1 (conducted in Year 2) and at the end of Key Stage 2 (in Year 6). Assessments at the end of Key Stage 2 include a combination of testing and teacher assessment. It is expected that all pupils should be achieving a Level 4 or higher by the time they reach the end of Year 6.

The DfE has defined a national floor standard of performance for schools across England. A minimum of 65% of pupils must achieve Level 4 or higher in Reading, Writing and Maths. In addition to this, pupils must make better than average progress in each of the three subjects. Where a school falls below all four measures, a school will be considered to have fallen below the nationally expected floor standard.

Attainment at Key Stage 2

In 2015, the percentage of pupils achieving Level 4+ in Reading, Writing and Maths (combined) in Coventry was 76% (prov), compared with 80% nationally. Tables 3 and 4 show English and Maths attainment for those pupils achieving a Level 5 or higher.

West Midlands and Statistical Neighbours

- The average rise in L4+ R/W/M seen across the West Midlands was 1%
- Performance across our statistical neighbours at 77% was 3% lower than the national figure of 80%
- At L4+ R/W/M, Coventry are placed 7th amongst our statistical neighbours in 2015

- When looking at the higher achievers for L5+ in English, Coventry is joint 5th with Leeds amongst our statistical neighbours
- When looking at the higher achievers for L5+ in Maths, Coventry is joint 6th with Portsmouth amongst our statistical neighbours

Table 2: Percentage of pupils achieving Key Stage 2 Level 4+ Reading, Writing and Maths

Statistical Neighbours		2013	2014	2015(prov)
887	Medway	71.0	75.0	73.0
874	Peterborough	71.0	73.0	74.0
831	Derby	72.0	77.0	75.0
335	Walsall	71.0	73.0	75.0
331	Coventry	71.0	76.0	76.0
373	Sheffield	72.0	76.0	77.0
383	Leeds	74.0	76.0	77.0
851	Portsmouth	70.0	75.0	77.0
852	Southampton	77.0	81.0	79.0
357	Tameside	74.0	80.0	80.0
350	Bolton	79.0	81.0	81.0
Statistical Neighbours		73.1	76.7	76.8
970	England	76.0	79.0	80.0

	Trend	Change from previous year	National Rank
331 Coventry	↔	0.00	133
984 West Midlands	↑	1.00	
970 England	↑	1.00	

Table 3: Percentage of pupils achieving Key Stage 2 Level 5+ English

Statistical Neighbours		2013	2014	2015(prov)
851	Portsmouth	32.0	35.0	33.0
874	Peterborough	35.0	33.0	36.0
335	Walsall	31.0	32.0	36.0
887	Medway	33.0	34.0	36.0
831	Derby	33.0	35.0	38.0
331	Coventry	35.0	37.0	39.0
383	Leeds	35.0	38.0	39.0
373	Sheffield	35.0	37.0	40.0
852	Southampton	35.0	39.0	41.0
357	Tameside	35.0	40.0	41.0
350	Bolton	40.0	42.0	44.0
Statistical Neighbours		34.4	36.5	38.4
970	England	39.0	41.0	43.0

	Trend	Change from previous year	National Rank
331 Coventry	↑	2.00	114
984 West Midlands	↑	3.00	
970 England	↑	2.00	

Table 4: Percentage of pupils achieving Key Stage 2 Level 5+ Maths

Statistical Neighbours		2013	2014	2015(prov)
874	Peterborough	37.0	37.0	34.0
335	Walsall	36.0	35.0	34.0
831	Derby	38.0	40.0	36.0
887	Medway	35.0	37.0	36.0
331	Coventry	37.0	40.0	37.0
851	Portsmouth	35.0	38.0	37.0
373	Sheffield	38.0	40.0	38.0
383	Leeds	38.0	39.0	38.0
852	Southampton	40.0	42.0	41.0
357	Tameside	38.0	41.0	41.0
350	Bolton	42.0	44.0	43.0
Statistical Neighbours		37.7	39.3	37.8
970	England	41.0	42.0	41.0

	Trend	Change from previous year	National Rank
331 Coventry	↓	-3.00	127
984 West Midlands	↔	0.00	
970 England	↓	-1.00	

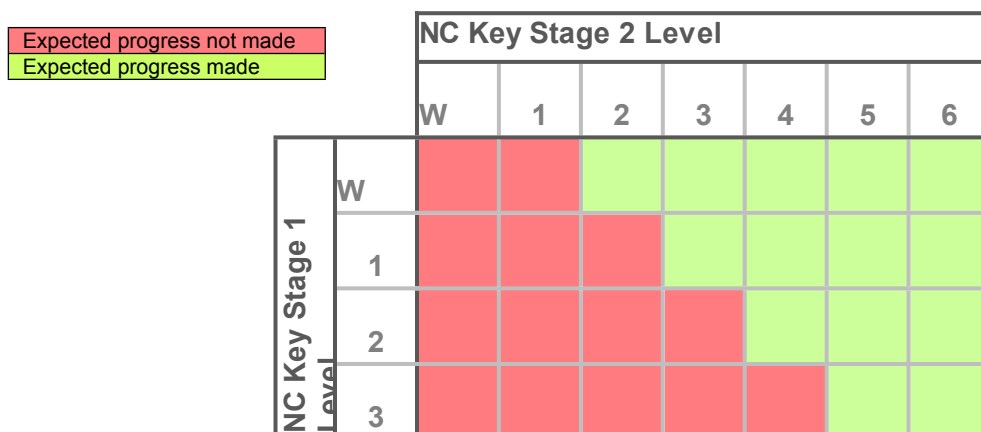
Progress between Key Stage 1 and Key Stage 2

An important characteristic of attainment across Coventry is that performance at Key Stage 1 is often below or in line with the national average, something which is not unexpected when taking into account the profile of our Local Authority reception intake.

How is Expected Progress measured?

In order to make 'expected progress' from Key Stage 1 to Key Stage 2, a pupil must transit two national curriculum levels. For example, a pupil assessed at Level 2 in Reading at the end Key Stage 1 must achieve a Level 4 in their Reading test at the end of Key Stage 2.

Figure 1: Progress from Key Stage 1 to Key Stage 2 (NC Levels)



- In **Reading**, Coventry is 1% below the national average with 90% of pupils making expected progress. Coventry shares 4th place with Derby.

- In **Writing**, 94% of children in Coventry reach their expected progress, the same as the national average which has increased from 93% in 2014 to 94% in 2015. Coventry shares 4th place with Peterborough and Tameside.
- In **Maths**, progress in Coventry has remained static at 89% in both 2014 and 2015, 1% below the national average. Coventry shares 5th place with Derby.

Table 5: Progression by 2 levels in Reading between KS1 and KS2

Statistical Neighbours		2013	2014	2015(prov)
851	Portsmouth	82.0	88.0	87.0
874	Peterborough	87.0	89.0	88.0
852	Southampton	88.0	88.0	88.0
887	Medway	84.0	88.0	88.0
373	Sheffield	86.0	89.0	89.0
335	Walsall	88.0	89.0	89.0
331	Coventry	88.0	91.0	90.0
831	Derby	86.0	91.0	90.0
357	Tameside	88.0	92.0	91.0
350	Bolton	90.0	93.0	92.0
383	Leeds	91.0	92.0	92.0
	Statistical Neighbours	87.0	89.9	89.4
970	England	88.0	91.0	91.0

		Trend	Change from previous year	National Rank
331	Coventry	↓	-1.00	104
984	West Midlands	↔	0.00	
970	England	↔	0.00	

Table 6: Progression by 2 levels in Writing between KS1 and KS2

Statistical Neighbours		2013	2014	2015(prov)
852	Southampton	91.0	92.0	90.0
831	Derby	89.0	91.0	92.0
373	Sheffield	92.0	93.0	93.0
851	Portsmouth	88.0	92.0	93.0
887	Medway	91.0	92.0	93.0
331	Coventry	92.0	94.0	94.0
874	Peterborough	92.0	93.0	94.0
357	Tameside	92.0	94.0	94.0
335	Walsall	90.0	92.0	95.0
383	Leeds	94.0	94.0	95.0
350	Bolton	96.0	97.0	96.0
	Statistical Neighbours	91.5	93.0	93.5
970	England	92.0	93.0	94.0

		Trend	Change from previous year	National Rank
331	Coventry	↔	0.00	71
984	West Midlands	↔	0.00	
970	England	↑	1.00	

Table 7: Progression by 2 levels in Maths between KS1 and KS2

Statistical Neighbours		2013	2014	2015(prov)
335	Walsall	87.0	85.0	86.0
887	Medway	84.0	86.0	86.0
851	Portsmouth	84.0	87.0	87.0
852	Southampton	88.0	89.0	87.0
874	Peterborough	87.0	88.0	88.0
331	Coventry	88.0	89.0	89.0
831	Derby	88.0	90.0	89.0
373	Sheffield	88.0	89.0	90.0
383	Leeds	90.0	91.0	90.0
357	Tameside	88.0	92.0	92.0
350	Bolton	92.0	93.0	93.0
Statistical Neighbours		87.6	89.0	88.8
970	England	88.0	90.0	90.0

		Trend	Change from previous year	National Rank
331	Coventry	↔	0.00	96
984	West Midlands	↑	1.00	
970	England	↔	0.00	

Closing the gap at Key Stage 2

The Department for Education has highlighted to Local Authorities the importance of closing the gap between disadvantaged pupils and their peers. In order to support this, pupils identified as 'disadvantaged' receive additional funding, known as the Pupil Premium. Presently, Pupil Premium funding is identified to benefit pupils who fall in to the following categories:

- Pupils identified as eligible for Free School Meals at any point in the past six years
- Any pupil identified as 'Looked After' for 1 day or more as of 31st March, 2015

The table below shows the attainment gap in Coventry between disadvantaged pupils and their peers, (please note that at this point in the year it is not possible to include the performance of Children Looked After).

Table 8: L4+ RWM attainment gap	2014	2015
Coventry Pupil Premium	67%	69%
Coventry Peers (non-PP)	79%	82%
National All	79%	80%
Gap to LA Peers (non-PP)	12	13
Gap to National	16	15

- The attainment gap between disadvantaged pupils and national is 15%, a fall of 1% from 2014.

3. Key Stage 4 (GCSE)

Key Stage 4 and national expectations

All pupils across England have the opportunity to sit a variety of subjects at the end of Key Stage 4 in Year 11, the aim of which is to receive a General Certificate in Secondary Education (GCSE) for each subject. The headline measure of attainment at Key Stage 4 is the percentage of pupils achieving 5+ GCSEs at grades A*-C (including English & Maths GCSEs).

Secondary School Floor Standard

The DfE have defined a national floor standard of performance for secondary schools across England. A minimum of 40% of pupils must achieve 5+ GCSEs at grades A*-C (incl. E&M). In addition to this, pupils must make better than average progress in English and in Maths. Where a school falls below all three measures, a school will be considered to have fallen below the nationally expected floor standard.

Changes in reporting school results

Late in 2013, the DfE introduced a new policy decision intended to reduce the number of schools entering pupils for re-sits. In previous years, secondary schools had been able to enter for pupils for GCSEs early, for example, a year 10 pupil could be entered for English and/or Maths in the summer before they entered year 11. This had the effect of allowing schools to 'bank' grades, therefore providing the choice to either continue to a higher grade in a future exam session or focus on other subjects. The new rules mean that only the pupil's first result is counted within the DfE Performance Tables.

Performance at Key Stage 4 (based on 'First Entry')

- In Coventry, the percentage of pupils achieving 5+ GCSEs at A*-C (including English and Maths at GCSE) is 50% in 2015. The proportion achieving the same measure across England is 53%.

Table 9: 5 or more A*-C grades at GCSE including English and Maths (End of Key Stage 4)

Statistical Neighbours		2013	2014	2015(prov)
831	Derby	55.6	50.2	46.2
874	Peterborough	56.2	50.0	47.7
851	Portsmouth	47.6	50.8	49.6
852	Southampton	58.1	51.0	49.6
331	Coventry	56.4	52.3	50.1
335	Walsall	58.7	48.8	50.2
373	Sheffield	57.3	53.9	53.1
383	Leeds	57.3	51.0	54.1
350	Bolton	60.7	57.3	56.3
357	Tameside	59.4	53.7	56.3
887	Medway	60.9	58.8	57.2
	Statistical Neighbours	57.2	52.6	52.0
970	England	59.2	53.4	52.8

		Trend	Change from previous year	National Rank
331	Coventry	↓	-2.20	127
984	West Midlands	↓	-0.90	
970	England	↓	-0.60	

West Midlands and Statistical Neighbours

- There was a decrease seen across the West Midlands of 1%.
- Coventry is placed 7th amongst our statistical neighbours for the proportion of pupils achieving 5+ A*-C (incl. E&M) based on first entry

Progress between Key Stage 2 and Key Stage 4

In order to make 'expected progress' from Key Stage 2 to Key Stage 4, a pupil must transit three national curriculum levels. For example, a pupil assessed at Level 4 in English at the end of Key Stage 2 must achieve a grade C or higher English GCSE test at the end of Key Stage 4.

Figure 2: Progress from Key Stage 2 to Key Stage 4 (NC Levels)

		Key Stage 4 GCSE Grade								
		U	G	F	E	D	C	B	A	A*
NC Key Stage 2 Level	1	Expected progress not made	Expected progress not made	Expected progress made	Expected progress made	Expected progress made	Expected progress made	Expected progress made	Expected progress made	Expected progress made
	2	Expected progress not made	Expected progress not made	Expected progress not made	Expected progress made	Expected progress made	Expected progress made	Expected progress made	Expected progress made	Expected progress made
	3	Expected progress not made	Expected progress not made	Expected progress not made	Expected progress not made	Expected progress made	Expected progress made	Expected progress made	Expected progress made	Expected progress made
	4	Expected progress not made	Expected progress not made	Expected progress not made	Expected progress not made	Expected progress not made	Expected progress made	Expected progress made	Expected progress made	Expected progress made
	5	Expected progress not made	Expected progress not made	Expected progress not made	Expected progress not made	Expected progress not made	Expected progress not made	Expected progress made	Expected progress made	Expected progress made
	6	Expected progress not made	Expected progress not made	Expected progress not made	Expected progress not made	Expected progress not made	Expected progress not made	Expected progress not made	Expected progress made	Expected progress made

- 71% of pupils made expected progress in English in 2015. This is above the national average of 70%, above our statistical neighbour average of 68% and places Coventry 3rd.
- 65% of pupils made expected progress in Maths in 2015, an increase of 6% from 2014. This is below the national average of 67% but above our statistical neighbour average of 63% and places Coventry joint 4th with Leeds.

Table 10: Percentage of pupils making expected progress from Key Stage 2 to 4 in English

Statistical Neighbours		2013	2014	2015
831	Derby	66.8	65.0	62.2
335	Walsall	65.9	62.9	63.7
851	Portsmouth	57.3	65.3	64.9
350	Bolton	67.7	70.2	66.4
373	Sheffield	70.7	69.8	67.3
383	Leeds	64.4	64.3	67.8
852	Southampton	71.6	74.9	68.4
874	Peterborough	67.3	74.0	70.1
331	Coventry	69.6	74.0	70.8
357	Tameside	69.0	69.1	72.1
887	Medway	71.7	76.5	73.3
	Statistical Neighbours	67.2	69.2	67.6
970	England	70.4	71.6	70.0

		Trend	Change from previous year	National Rank
331	Coventry	↓	-3.20	71
984	West Midlands	↓	-1.70	
970	England	↓	-1.60	

Table 11: Percentage of pupils making expected progress from Key Stage 2 to 4 in Maths

Statistical Neighbours		2013	2014	2015
335	Walsall	66.4	56.1	58.9
831	Derby	68.1	64.0	59.7
852	Southampton	69.3	62.2	60.7
874	Peterborough	65.8	54.9	61.0
851	Portsmouth	60.9	59.6	61.9
350	Bolton	71.7	64.9	64.5
331	Coventry	68.4	59.2	64.8
383	Leeds	66.9	61.5	64.8
373	Sheffield	66.6	62.7	64.9
357	Tameside	67.1	59.9	65.6
887	Medway	69.2	67.9	67.3
	Statistical Neighbours	67.2	61.4	62.9
970	England	70.7	65.5	66.6

		Trend	Change from previous year	National Rank
331	Coventry	↑	5.60	94
984	West Midlands	↑	1.00	
970	England	↑	1.10	

Closing the gap at Key Stage 4

Just as in Primary Schools, the DfE has highlighted to Local Authorities the importance of closing the gap between disadvantaged pupils and their peers. Evidence nationally shows that as pupils move through the education system, the attainment gap seen between disadvantaged pupils and their peers widens.

Presently, the identification of disadvantaged pupils within secondary schools is the same as that within primary schools:

- Pupils identified as eligible for Free School Meals at any point in the past six years
- Any pupil identified as 'Looked After' for 1 day or more as of 31st March, 2015

The table below shows the attainment gap in Coventry between disadvantaged pupils and their peers, (please note that at this point in the year it is not possible to include the performance of Children Looked After).

Table 12 5A*-C EM	2014		2015	
Attainment gap	Coventry	National	Coventry	National
5A*-C EM PP	35.3%	36.4%	33.3%	36.1%
Peers (non-PP)	60.8%	64%	58.2%	63.6%
Gap	25.5	27.6	24.9	27.5

- In Coventry the outcomes of pupils receiving PP for 5A*-C EM has decreased by 2% points from 35.3% to 33.3%.
- However, the gap has narrowed by 0.6% points from 25.5 to 24.9.
- The 2014 and 2015 gap in Coventry is lower than national.

5. Key Stage 5 (Level 3 study)

The majority of pupils entering further education at age 16 or higher do so to study qualifications that carry an equivalence of Level 3 or higher.

A2 refers to examination results gained by pupils completing 2 years of A Level study. AS refers to examination results gained by pupils after their first year of A Levels.

A Level – A2 results in 2015 saw a rise in:

- the percentage of A* grades to **8.3%** (3.2% increase from 5.1% in 2014). Coventry students outperformed students nationally (8%).
- the percentage of A*-B grades to **45.4%** (a 4.6% increase from 40.8% in 2014). The gap between Coventry and national has narrowed by 4.1% to 6.9% (national at 52.3%).
- the overall pass rate (A*-E) of 0.1% to an all-time high of **98.6%**. For the third consecutive year Coventry students outperformed students nationally (98.1%).

A Level – AS results in 2015 saw a rise in:

- the percentage of A-B grades to 30.5% (0.6% increase from 29.9% in 2014). National at 40.5%.
- the overall pass rate (A-E) of 0.4% to 87%. National at 89.5%.

Table 13: Advanced Level				
	2014		2015	
	Coventry	National	Coventry	National
A2 A* grades	5.1%	8.0%	8.3%	8.0%
A2 A*-B grades	40.8%	51.8%	45.4%	52.3%
A2 pass rate (A*-E)	98.5%	98%	98.6%	98.1%
AS A-B grades	29.9%	39.8%	30.5%	40.5%
AS pass rate (A-E)	86.7%	88.9%	87.0%	89.5%

For **Vocational qualifications** (BTEC and OCR qualifications) the overall pass rate increased to **99.8%**.

Table 14: Vocational qualifications		
	2014	2015
Pass rate	99.7%	99.8%
National comparison not yet available		

6. Post-16 participation in education, employment and training

September Guarantee

The September Guarantee helps local authorities fulfill their duty to provide education and training to young people and find them a suitable place. The offer should be appropriate to the young person's needs and can include:

- full-time education in school sixth-forms or colleges
- an apprenticeship or traineeship
- employment combined with part-time education or training.

The September Guarantee data show Coventry above national, West Midlands and our statistical neighbour average for the third consecutive year.

Table 15: September Guarantee			
	2012	2013	2014
Coventry	92.8%	92.8%	94.8%
England	92.4%	92.1%	92.8%
Statistical neighbours	93.2%	92.6%	93.9%
West Midlands	92.5%	90.5%	92.9%

Participation in education, training and employment

The proportion of 16- and 17-year-olds in education and training in Coventry is above national and West Midlands for the third consecutive year.

Table 16: Participation in education, training and employment			
	June 2013	June 2014	June 2015
Coventry	89.4%	90.3%	91.0%
England	88.4%	89.7%	89.5%
West Midlands	87.4%	87.5%	89.3%

Destinations of key stage 4 and key stage 5 students

Destination measures provide clear and comparable information on the success of schools and colleges in helping their young people take qualifications that offer them the best opportunity to continue in education, employment or training.

There is a time lag between students completing their key stage and destination measures being published. This time lag is because a year had to elapse before sustained participation in education or training can be measured.

Table 17: KS4 Percentage of cohort going to, or remaining in, an education or employment destination			
	2010/11 cohort in 2011/12	2011/12 cohort in 2012/13	2012/13 cohort in 2013/14 (prov)
Coventry	89%	91%	91%
England	89%	90%	92%
West Midlands	89%	90%	91%

Table 18: KS5 Percentage of cohort going to, or remaining in, an education or employment destination			
	2010/11 cohort in 2011/12	2011/12 cohort in 2012/13	2012/13 cohort in 2013/14 (prov)
Coventry	81%	74%	81%
England	74%	71%	79%
West Midlands	75%	72%	79%

- The most recent KS4 data show Coventry in line with West Midlands and just below national by 1%.
- The KS5 data show Coventry above national and West Midlands for the third consecutive year.
- The percentage of KS5 students progressing to a higher education institution in 2013/14 was 62% compared to 58% nationally.

16-18 NEET and Situation Not Known rates

The term NEET refers to the group of 16-19 year olds who are not engaged in any form of further education, employment or training – this includes those who are actively seeking help via other agencies. The NEET figure is an average of the number of young people recorded as NEET at the end of November, December and January.

The term Not Known refers to young people who are believed to be resident in the area but whose current activity is not known – Current situation not known/Cannot be contacted/Refuse to disclose.

	2012-13		2013-14		2014-15	
	NEET	Not Known	NEET	Not Known	NEET	Not Known
Coventry	5.2%	17.1%	7.4%	9.4%	6.8%	10.7%
England	5.8%	10.8%	5.3%	9.2%	4.7%	9.0%
Stat neighbours	6.8%	6.9%	6.3%	9.6%	5.7%	8.5%
West Midlands	6.2%	16.3%	6.0%	15%	5.4%	12.2%

- The 2014-15 annual published Coventry NEET rate shows a slight decrease compared to 2013-14 from 7.4% (approx. 840 young people) to 6.8% (approx. 770 young people) but is above England, our statistical neighbour average and West Midlands.
- The 2014-15 Coventry Not Known rate is slightly higher than in 2013-14 at 10.7% (approx. 1200 young people) and is above England and the statistical neighbour average but below West Midlands.
- However, the most recent monthly data show an improvement in the Not Known figures whilst the NEET figures, pleasingly, are remaining stable.

	June 2015		July 2015		August 2015	
	NEET	Not Known	NEET	Not Known	NEET	Not Known
Coventry	6.5%	6.7%	6.5%	6.7%	6.7%	7.6%

7. Ofsted

Primary and secondary schools

All maintained schools across England are subject to monitoring and inspections by the Office for Standards in Education, Children's Services and Skills (Ofsted).

Further information on Ofsted and its purpose can be found at the following link:

<http://www.ofsted.gov.uk/resources/school-inspections-guide-for-parents>

When a school has been inspected, Ofsted will determine whether the school falls into one of four categories, these are:

- Grade 1 (Outstanding)
- Grade 2 (Good)

- Grade 3 (Requires Improvement)
- Grade 4 (Inadequate)

The Ofsted position of schools across Coventry is shown below as of August 2014 and subsequently October 2015.

Date	Sector		Good or better	1	2	3	4
October 2015	Primary	Coventry	82%	4%	78%	18%	0%
		National	85%	18%	67%	14%	1%
	Secondary	Coventry	59%	29%	29%	35%	6%
		National	74%	22%	53%	21%	5%
August 2014	Primary	Coventry	73%	6%	67%	24%	3%
		National	81%	17%	64%	16%	2%
	Secondary	Coventry	67%	28%	39%	22%	11%
		National	70%	21%	49%	23%	6%

- As of October 2015, 82% of primary schools were rated as Good or Outstanding, an improvement of 9% from August 2014 (compared with 85% nationally)
- As of October 2015, 59% of secondary schools were rated as Good or Outstanding, a decline of 8% from August 2014 (compared with 74% nationally).

Ofsted also inspect Local Authority arrangements for school improvement as referenced within the accompanying presentation. Within this process they evaluate the effectiveness of corporate leadership and strategic planning. They consider how elected members and senior officers have an ambitious vision for improving schools. They evaluate how elected members articulate the Local Authority's strategic role and understand the priorities for improvement. Systems of accountability need to be transparent and efficiently monitored in a systematic way so that members' challenge of officers is well informed by high-quality information and data.

8. Conclusion

Members have been provided with the provisional local authority results to give them an opportunity to comment or raise questions. Further analysis will be sent to members once validated information is available.

The accompanying presentation summarises the education successes and key priorities for the 2015/2016 academic year. The presentation also includes information on the Ofsted Framework for the inspection of local authority arrangements for supporting school improvement.

9. References and sources

Much of the data contained in the tables above is currently accessible to the public via the DfE's Government Data website:

<https://www.gov.uk/government/organisations/department-for-education/about/statistics>

Early Years Foundation Stage Profile

<https://www.gov.uk/government/collections/statistics-early-years-foundation-stage-profile>

Published: 13 October 2015

Key Stage 2

<https://www.gov.uk/government/collections/statistics-key-stage-2>

Published: 27 August 2015

Key Stage 4 (GCSE)

<https://www.gov.uk/government/collections/statistics-gcses-key-stage-4>

Published: 15 October 2015

Key Stage 5 (GCE A Level)

<https://www.gov.uk/government/collections/statistics-attainment-at-19-years>

Published: 15 October 2015

Ofsted 'Data View'

<http://dataview.ofsted.gov.uk>

Published: Ofsted Data View is usually updated on a six monthly basis

Local authority interactive tool (LAIT)

<https://www.gov.uk/government/publications/local-authority-interactive-tool-lait>

A tool for comparing data about children and young people across all local authorities in England

Handbook for the Inspection of Local Authority Arrangements for Supporting School Improvement

https://www.gov.uk/government/uploads/system/uploads/attachment_data/file/462228/Handbook_for_the_inspection_of_local_authority_arrangements_for_supporting_school_improvement.doc

This handbook provides instruction and guidance for inspectors conducting inspections of local authority arrangements for supporting school improvement under Section 136 (1)(b) of the Education and Inspections Act 2006.

This page is intentionally left blank



Coventry City Council

Briefing note

To: Education and Children's Services Scrutiny Board (2)

5th November 2015

Subject: Progress on Children's Services Improvement Plan in response to Ofsted Single Inspection and the Review of the Local Safeguarding Children's Board

1 Purpose of the Note

- 1.1 To inform the Education and Children's Services Scrutiny Board (2) of the progress with the Children's Services Improvement Plan reported to the Children's Services Improvement Board on 2 October 2015. The report is based on data from August 2015, unless stated otherwise. The next Improvement Board will be held on 18 November 2015.

2 Recommendations

- 2.1 It is recommended that Scrutiny Board 2:

- 1) Note the progress made to date.
- 2) Receive regular updates from the Children's Services Improvement Board that will include further progress relating to the children's services improvement plan.

3 Information/Background

- 3.1 The Ofsted Inspection of Coventry's Children's Services and the review of the Local Safeguarding Children Board (LSCB), published in March 2014, judged services and the LSCB to be inadequate. The Ofsted report identified a number of priority actions and areas for improvement. In response to the Ofsted report, a Children's Services Improvement Board was established and an Improvement Plan published on 27th June 2014. A revised and updated Improvement Plan was published on 10th March 2015.
- 3.2 The Children's Services Improvement Board is chaired by Mark Rogers, Chief Executive at Birmingham City Council. The Board includes elected Members, Council representatives and representatives from partner agencies in the City as well as a representative from the Department for Education. Progress is reported to the Improvement Board every six weeks.
- 3.3 The Department for Education issued an Improvement Notice on 30th June 2014. The Improvement notice is reviewed every six months by the Department for Education. A six month review took place on 20th January 2015 and the twelve month review took place on 30th June and 1st July 2015. The feedback from the review is provided in section 7 of this report. The Independent Chairs of both the Improvement Board and the Local Safeguarding Children Board also submit a written report to the Minister on a regular basis.

3.4 An Executive Board was established in January 2015 in order to focus on maintaining momentum and evaluating progress against the Improvement Plan. This Board meets every six weeks prior to the Improvement Board

3.5 The Council, alongside partner organisations will retain a relentless focus on securing improvements in services for children, young people and families to ensure they are safeguarded and achieve positive outcomes.

4 Improvement Plan Themes

4.1 The revised Children's Services Improvement Plan, completed on 10 March 2015 includes six key themes, which have been aligned to the DfE improvement notice. The plan provides a stronger focus on quality of practice and workforce development, and the continuation of improvements to the LSCB. A summary of the plan is shown in **Appendix 1**. The six themes are as follows:

- Early Help & Partnership Working
- Local Safeguarding Children Board
- Quality and Effectiveness of Practice
- Quality of Assurance and Audit
- Leadership and Governance
- Services for LAC, Care Leavers and Permanency
-

5 Children's Services Improvement Plan Progress to date

5.1 The following progress was reported at the Children's Services Improvement Board on 2 October 2015.

Theme 1 – Early Help and Partnership

The operational delivery of the draft Early Help Strategy continues. The strategy will be fully signed off in November 2015.

The Acting Early pilots continue to evidence improved integrated working, improved communications and information sharing. The remaining 5 new sites will be operational during October.

The multi-agency eCAF system records all active open CAFs. Health now holds a greater proportion of CAF's. However, the overall proportion of CAF's held by the LA remains at around 74% as it has done for some time. The table below provides the breakdown of location of CAFs held at end of August 2015

Lead Agency	Count	%
Children & Families First	1012	51.50%
Children's Centre	362	18.4%
Children's Services	80	4.1%
Education	7	0.4%
Health	117	6.0%
Schools	368	19.7%
Total	2219	100.0%
Number & non-LA	510	26%

Coventry established a Multi-Agency Safeguarding Hub (MASH) in September 2014. The functioning of the MASH has been assisted by the appointment of a Service Manager who is also responsible for the Child Sexual Exploitation (CSE) team.

An Independent Review of the Coventry MASH has been completed by Nigel Boulton, an ex- Senior Police Officer who advised on setting up the first MASH nationally, and has advised on others. The report was presented by him to the MASH Board at the beginning of September 2015 and was discussed at the Improvement Board on 2 October 2015. The main findings of the review were discussed, a Task and Finish Group is considering the recommendations and their view as to which recommendations should be adopted and will be presented to the next MASH Board and Improvement Board in November 2015.

The on-going issue relating to Strategy Discussions/Meetings was discussed at Improvement Board on 2 October 2015. A briefing note to clarify current processes and practice was agreed. Janet Mokades, the LSCB Chair will be evaluating whether the new processes/arrangements are working at a meeting planned for 23 October 2015. The LSCB Chair will report back progress and provide an opinion on the compliance of strategy discussions at the next Improvement Board meeting.

Monthly monitoring of re-referral rates is in place to ensure that diversion and step down to Early Help are appropriate and effective. The average rate of re-referrals in the last 12 months has remained below those of our statistical neighbours, although, the monthly average has seen a steady rise since April 2015. The year to date of 29.9% is a significant increase on the 21.5% recorded in 2014/15. Referral feedback is being tightened up and provided by secure email and further work is being undertaken to understand the upward trend in re-referrals. The MASH ensures that all referrers are given information as to the result of their referral.

The CSE delivery plan is in place and is being driven through the CSE Board and the Operational Subgroup to improve the city's response and awareness across all communities and partners. We are currently seeking a new delivery model across the partners via a Prevent, Prepare, Pursue and Protect Plan.

With effect from September 2015 Barnardos has been undertaking return home interviews for young people missing from care. Children missing from education are currently monitored separately, work is currently being undertaken to join up the activity around missing; future reports will provide missing episodes by home, care and education.

Theme 2 - Local Safeguarding Children Board

The LSCB provides a regular progress update to the Improvement Board to highlight progress against the three requirements set out in the Improvement Notice. These are;

- the LSCB to be strengthened so it can ensure that partners work together effectively
- multi-agency practice and individual partner audits are robust
- all partners are committed to a shared set of priorities for safeguarding, child protection and early intervention.

The following progress was reported to the Improvement Board on 2 October 2015:

The policy and procedures subgroup has now started work. A simplified and merged procedure for children missing from home, care or school has been drafted and up to date summary figures for children missing from all these categories will be provided to main Board at its October meeting. Work to refine and monitor the implementation of procedures for hard to engage families continues. Following the legal challenge to the indiscriminate reporting of all DV notifications to schools, the process is being further refined.

The Board's Quality and Effectiveness subgroup has recently carried out a multi-agency audit of some CSE cases. The results have not yet been analysed and presented to Board but it has been agreed that they will feed into the Operation Encompass review.

There has been good progress on staffing. The quality assurance co-ordinator has now taken up post. This enables the Board to further develop its assurance role.

Considerable activity is underway to improve multi-agency practice and single agency audit. It is clear that there is some good work being done but there are also aspects of multi-agency practice that are still uneven and lacking in rigour. The Board's safeguarding workforce multi-agency audit has now been completed and the results are being analysed.

Following the Board's July event on strategy discussions, progress is being monitored on a regular basis and a date has been set for a recall meeting in October to evaluate how well the new processes are working.

The S175 schools audit was completed and presented to Board. There was a very good response from maintained schools, academies, free schools, pupil referral units and colleges, with 100% completing the audit. No major deficiencies emerged from the findings. Where there were shortfalls, these have been followed up with advice and recommendations. Schools are expected to confirm that they have complied with requirements and compliance will be monitored. Of particular interest to the Board was the number of children in need of safeguarding who are being monitored by schools – there are one thousand one hundred and thirty six. These are children who do not meet the thresholds for external agency referral. It is clear that a great many Coventry children are receiving early help from schools, a key universal service. The Board's small investigation of the nature of the cases and the help being given by schools revealed a spectrum of needs to which schools are responding.

The first Board peer review panel was held in July. The next is scheduled for October. The panel consisted of two Board members from social care and education together with the Chair. The session reviewed the quality of practice in Early Help in health and the voluntary sector. This was a very successful session at which both the panel and the participants learned a lot. It is clear that the quality of practice is variable, with some very good aspects and that the biggest quality issue is the lack of knowledge amongst practitioners of what is available in services other than their own. This leads on occasion to default referrals to social care. A short report on recommendations and action flowing from the findings will go to the next main Board.

The LSCB have produced pocket sized cards and large bright posters setting out the Seven Golden rules for information sharing in order to remind staff across all services of the importance of doing this when children are at risk of harm. There has been high demand for these, an encouraging sign that should help lead to more consistent information sharing and so better safeguarding outcomes for children.

It is now a year since the Board adopted its new focus on the voice of the child and outcomes for children. The draft annual report, which will go to the October board meeting, will pull together what we have learned from listening to the voice of the child. It will assess what progress has been made over the year and how what has been done has impacted on outcomes for children.

Theme 3 - Quality and Effectiveness of Practice

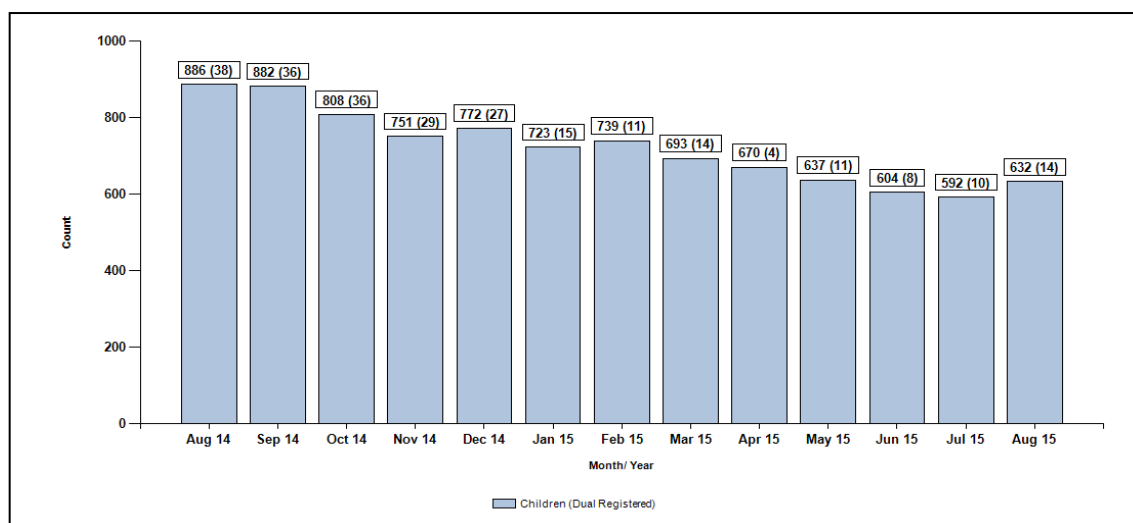
A draft Workforce Strategy has been completed and was presented to the Improvement Board in June 2015. The Board's comments are being incorporated in to a final document. Consideration is now being given to taking forward the recommendations relating to secondments and bursaries for unqualified Coventry staff who would like to be considered for such a scheme.

The second phase of the campaign to appoint experienced social workers will be launched in October 2015. There are currently 16 applicants (13 are newly qualified Social Workers) who are in the recruitment and selection process.

A third Practice Educator Post has been agreed and appointed to in order to support the significant number of Newly Qualified Social Workers.

"Back to Basics" training, which forms an important part of the Learning and Development programme, has been running throughout the summer and will continue alongside the very full range of training courses which have been commissioned or are being delivered in-house. The outcome will be a set of shared and agreed practice standards and expectations which will form the foundation of work with children and families.

The number of children with a Child Protection Plan increased in August 2015 to 632, see table below, as at 8 October this number has reduced further to 567. Only 9(1.4%) of children who were subject to a Child Protection Plan at the end of August 2015 had been on a plan for more than 24 months.



Timeliness of assessments undertaken has continued to be above 90% since April 2015.

The Local Government Association has been asked to undertake a Safeguarding Practice Diagnostic Peer Review. This took place between 19 and 22 October 2015 for 4 days. It focused on two main aspects:

- 1) The quality of practice with particular emphasis on recent (approximately one year) improvements in its effectiveness
- 2) How supervision and support to social workers has improved and is evidenced in case management.

The following **Key Lines of Enquiry** have been agreed:

- Are child protection plans robust and do they identify what professionals and families need to do to make children safe?
- Is the identification of needs and the development of plans translated into effective action that impacts positively on the child?
- How is drift identified and managed?
- What is the quality of the social work relationship with children and how is this evidenced in case files?
- How is the work of health professionals impacting on case planning?
- What evidence is there of improvement in the Quality of Social worker support and supervision
- Are thresholds for services appropriately applied in accordance with Working Together 2015?

Theme 4 - Quality Assurance and Audit

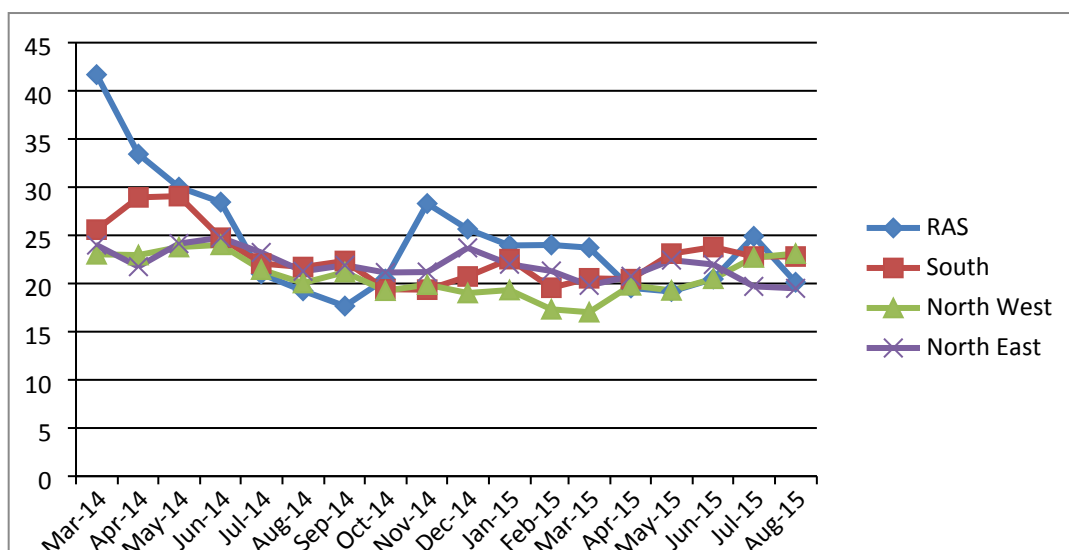
A review of the focus of performance management across the service has been completed and performance dashboards for each team are now available. Each service has identified a minimum of 3 key indicators on which to focus on a weekly basis.

Full case audits will be undertaken on a monthly basis from September 2015, with the aim of completing 40 cases per month.

Quality Assurance activity with particular reference to impact will be reviewed this month, with more detail and key themes from audits and multi-agency audits and single audits fed into Improvement Board. The Local Government Safeguarding Diagnostic review in October 2015 will also look at this more detail. The LSCB Chair has also been asked to provide fresh opinion on the LSCB framework and the audit process in the Council, as this is not yet in place.

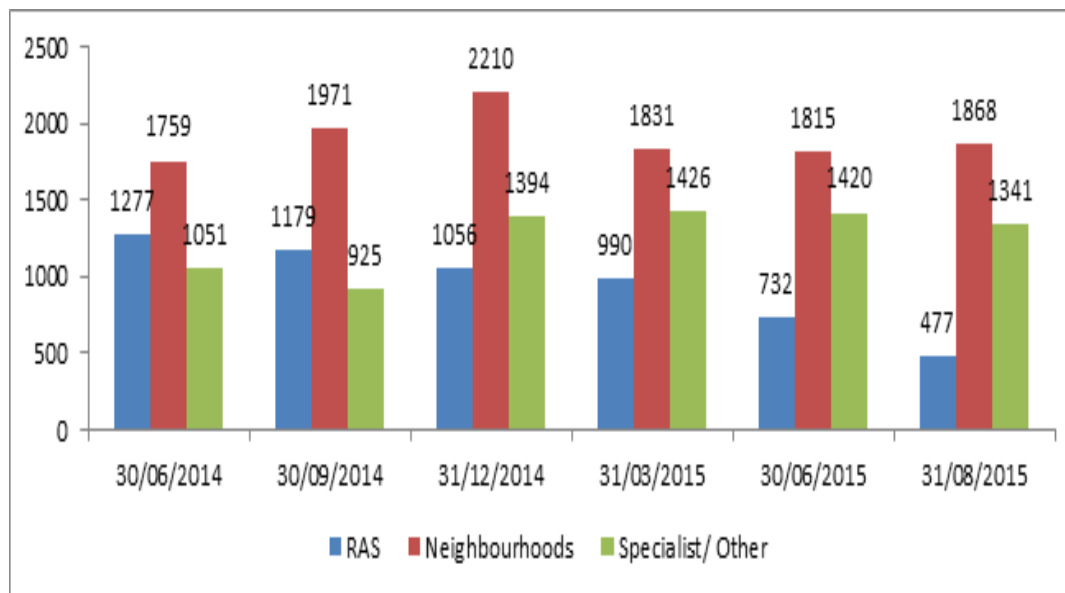
Theme 5 - Leadership and Governance

Caseloads in the Referral and Assessment service (RAS) averaged 20 at the end of August 2015 and remain within target (20-25) Caseloads in the Neighbourhood teams averaged 19 to 23 at the end of the August 2015 with the target being 20 to 22.



Caseloads for Independent Reviewing Officers (IRO'S) have significantly reduced and have averaged 74 to 76 from April to August 2015 as against 129 in October 2014. They are now almost at the level recommended in the IRO handbook.

The number of open cases held by the Referral and Assessment Service (RAS) has reduced since June and reported 477 cases in August 2015, compared with 1000 cases previously. This is being reviewed to assess whether this is a trend.



Social Workers are receiving regular supervision, 68% (237) staff received supervision in August 2015. The 32% (110) who did not have supervision within the 4 week period was due to factors such as annual leave, sickness absence, maternity leave and emergencies such as attendance at Court. There is also a number of staff who have supervision bi-monthly as monthly supervision is not a requirement and do not hold caseloads. Their inclusion in this indicator distorts the figure.

A second Supervision Survey was launched in mid-September 2015. This is very similar to the survey undertaken by the same external organisation a year ago. This will sit alongside a Member Task and Finish Group, which will be completing its work in November.

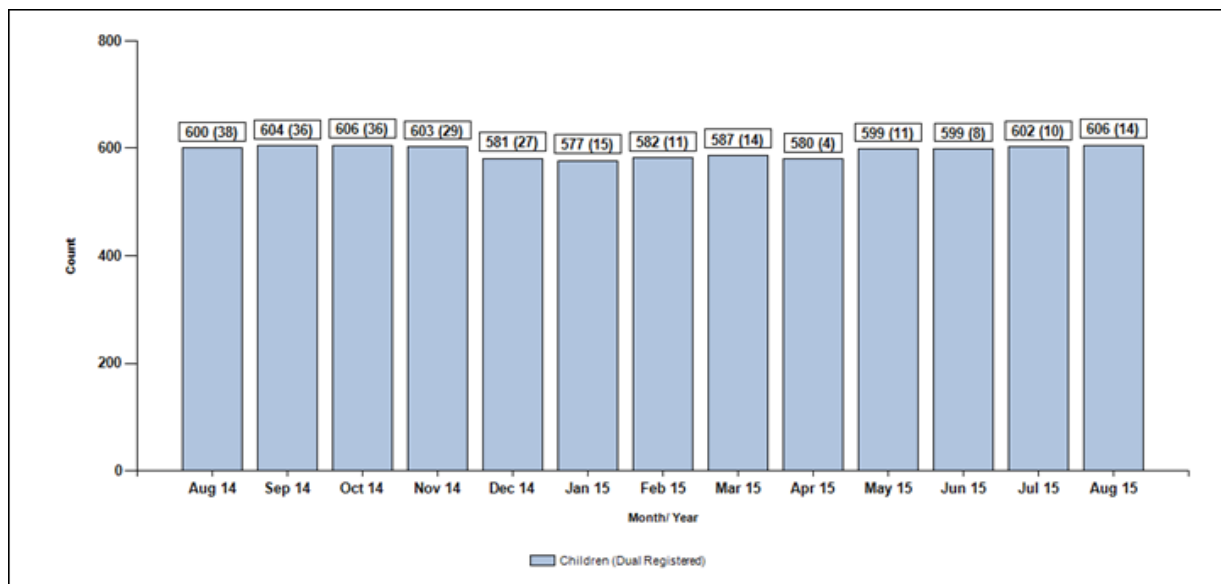
The chart below shows the activity volumes over the last few years across the service, the September figures will be updated in October 2015:

Social Care and Early Help activity levels:

	Contacts	Referrals	Child Protection	Looked After Children	Children In Need	CAFs open
Mar-12	1533	405	423	578	1219	94
Mar-13	1846	389	519	619	1632	1160
Mar-14	1885	677	765	630	3208	1668
Sep-14	1641	752	918	613	3112	1695
Dec-14	1933	680	810	626	3476	1786
Mar-15	2351	648	734	628	2932	2033
Apr-15	2028	539	699	604	2695	2135
May-15	2250	619	649	616	2678	2161
June -15	2720	861	617	600	2892	2135

Theme 6 - Services for LAC, Care Leavers and Permanency

The number of Looked After Children continues to be relatively stable, being 606 at the end of August 2015. The table below highlights the direction of travel over the last twelve months.



An update on Adoption and Permanency was presented to the Improvement Board on 2 October 2015. 12 children are currently waiting to be placed and 24 adopters are yet to be linked, the mis-match depends on what adopters are approved for.

The DfE remarked in July 2015 that our progress 79% of children who waited less than 19 months between entering care and being placed with adopters (A3) was very good. This is a significant improvement on 46% in 2012/13.

Coventry still has some legacy cases, which are cases that take longer than the average. Coventry does have one of the most effective operating models, which reduces the delay for children.

22 children were adopted between 1 April 2015 and 30 September 2015. A further 48 children were placed for adoption. The projection for the number of adoptions this year is 60 – higher than was originally predicted and this does not reflect the national trend, which is a downturn in the number of Adoption Orders made.

The table below highlights the direction of travel over the last few years.

Number of children Adopted	2011/12	2012/13	2013/14	2014/15	2015/16
Number of children adopted	28	40	52	70	Up to 30 September 2015 22 Children were adopted – (1 April – 30 September 2015.) and 48 placed

Recruitment of in-house foster carers remains a very high priority in that more children are placed with Independent Fostering Agencies than with in-house carers. Recruitment is being targeted at those who can foster children within the age ranges that are needed. A range of initiatives are in place to improve recruitment.

The tables below shows the position at Quarter 1 April – June 2015 for foster carers, this information is updated quarterly and will be updated in October for Quarter 2.

Fostering Scorecard Households & Capacity:

Quarter	Approved Households	Places	Places Filled (%)	Places On Hold or Blocked (%)	Places Vacant (%)
Q1	147	236	136 (57.6%)	53 (19.9%)	47 (22.5%)

Please Note: Due to naturally occurring delays in recording information and the complexities in compiling this data, figures provided in the above table should read as an 'as at' figure, based on what was audited when the report was run. Unlike other tables in this scorecard, previous quarters' data will NOT be re-adjusted in subsequent scorecards prior to being fully audited again at year-end.

Quarter	New Foster Carer Households Approved	Places Gained	Foster Carer Households Deregistered	Places Lost	Net Households	Net Places
Q1	2	2	5	11	-3	-9
YTD	2	3	5	11	-3	-9

Please Note: Due to the timeliness of recording, figures for previous quarters may change in subsequent scorecards.

Recruitment Activity:

Month	Initial Enquiries	Initial Visits	Assessments Started (Stage 1)	Assessments Started (Stage 2)
Q1	65	10	16	4
Total	65	10	16	4

Enquiry & Assessment Outcomes: Initial Enquiries:

Outcome	Q1	YTD
NFA	54	54
Stage 1	16	16

Assessments (Stage 1):

Outcome	Q1	YTD
NFA	7	7
Stage 2	4	4

Assessments (Stage 2):

Outcome	Q1	YTD
NFA	0	0
Panel	2	2

Elected Members are committed to assisting with raising awareness of fostering and attracting new applicants. The Fostering Steering Group continues to focus on increasing the number of approved foster carers and children placed.

The progress of cases of children subject to Care Proceedings is tracked by the Case Progression Officer. The introduction of this post has helped to reduce timescales for

Proceedings and has moved “legacy” cases on. In June 2014 the average length of Proceedings was 42.1 weeks. This had decreased to 36 weeks by June 2015. It is predicted that the length of Proceedings will reduce further to 29 weeks by the end of the calendar year.

The Family Drug and Alcohol Court (FDAC) first court date will be 20 October 2015. Training has taken place for the FDAC team with Judges from the Coventry Court, and partners from the Tavistock Clinic and Coram, as well as voluntary and health agencies

6 Communication

- 6.1 The Council’s website and Beacon/Intranet is updated to include current progress. New and emerging priorities for the directorate and the organisation means a new approach to communications is needed to demonstrate the directorates’ work as part of the wider organisation; a priority now to share messages across the Council to emphasise the importance of working corporately and not in silos.
- 6.2 A new e-newsletter will be launched focusing on Children’s Services ahead of Ofsted re-inspection. This will be issued to all staff in Children’s Services, all partners, senior managers, Members to ensure everyone is aware of the progress made so far, what’s still to be achieved and the role all employees can play in supporting the service in achieving a better Ofsted result

6.3 Authors:

Sonia Watson, Children’s Improvement Plan Project Manager,
Isabel Merrifield, Assistant Director Safeguarding, Policy and Quality, People
Yolanda Corden, Assistant Director, Children’s Social Care, People

Contact details: yolanda.corden@coventry.gov.uk Tel: (024) 7683 1901
 sonia.watson@coventry.gov.uk Tel: (024) 7683 1890
 isabel.merrifield@coventry.gov.uk Tel: (024) 7683 1652

Appendix 1

A One Page Summary of the Children's Services Improvement Plan March 2015

Note: Themes 1-5 theme are aligned to the DfE notice, the additional theme highlights services for LAC, Care Leavers and Permanency



Key Challenges

Sustainability - managing future work volumes, resourcing and sustainability of improvements

Evidencing Impact - evidencing improvements and the impact on achieving good outcomes for children, young people and families



This page is intentionally left blank

Education and Children's Services (2)

Scrutiny Work Programme 2015/16

18 June 2015
Serious Case Review – Child T
Serious Case Review – Child D
2 July 2015
Support to School Governors
Improvement Board Progress Report from 3 June 15
Policy Statement on Delegation Authority for Foster Carers
Progress on ceasing of the school catering service – briefing note update
10 September 2015
Progress on implementing Special Educational Need and Disabilities Reforms
Adoption Annual Report
Improvement Board Progress Report from 26 August 15 – DfE review report
8 October 2015
Pupil Premium Uptake – briefing note update
Free early year education or childcare funding for 2 year olds – briefing note update
Quality Assurance – Children's Placements
5 November 2015 – to take place at President Kennedy School
Y6-Y7 Transition – President Kennedy Bridge Project
Education progress and school improvement
Improvement Board Progress Report from 2 October 15
25 November
CAMHS re-modelling – joint with Health and Social Care Board (5)
Date to be arranged
Serious Case Review – Child S
LSCB Annual Report
10 December 2015
Fostering Task and Finish Group Recommendations – progress report
Fostering Annual Report
Early Help and the Children and Families First Service (Early Intervention)
Troubled Families
Adult Education
Improvement Board Progress Report from 18 November 15
7 January 2016
Evaluation of the Multi-Agency Safeguarding Hub including a visit
Education progress focussing on underachieving groups
School Place Planning
Appointment of Local Authority Governors
25 February 2016

Improvement Board Progress Report from 6 January 16
17 March 2016
Improvement Board Progress Report from 17 February 16
14 April 2016
Improvement Board Progress Report from 30 March 16
Date to be decided
Preparation for Leaving Care
Teen pregnancy and PSHE in schools
Barnardo's project – children missing from care
Voices of Care
Consultation on proposed changes to the school transport service.
Youth Offending Service
Appointment of Local Authority Governors
Children's Social Care Workforce Strategy
Changes to the Library Service
Performance Monitoring
Serious Case Reviews
Children's Centres Performance

Date	Title	Detail	Cabinet Member/ Lead Officer	Source	Outcomes
18 June 2015	Serious Case Review – Child T	To review the report of the LSCB to monitor progress on recommendations.	Janet Mokades Cllr Ruane		Recommendations to LSCB re: Housing Providers and functioning boilers.
	Serious Case Review – Child D	To review the report of the LSCB to monitor progress on recommendations.	Janet Mokades Cllr Ruane		
2 July 2015	Support to School Governors	To review the changes to the service provided to support school governors, particularly around training. Changes to be made in September.	Paul Weston Dave Willis Cllr Kershaw	Meeting 23 April 15	A review meeting with Cabinet Member and officers to look in more detail at the policy for appointing local authority governors
	Improvement Board Progress Report from 3 June 15	On-going monitoring of progress against the action plan. To include the numbers of children looked after and those discharged from care.	Yolanda Corden Cllr Ruane	Council 10/4/14	Enquire about holding a meeting at President Kennedy school to find out more about their work on transitions.
	Policy Statement on Delegation Authority for Foster Carers	A recommendation from the task and finish group on Fostering	Jivan Sembi Cllr Ruane	Meeting 26/3/15	
	Progress on ceasing of the school catering service – briefing note update	To consider the progress of the transfer of schools catering from the local authority to other providers as well as considering the option of a social enterprise	Pauline Reading/ Cllr Kershaw	Meeting 12 th Feb 15	Further update following a half term implementation of the new arrangements.
10 September 2015	Progress on implementing Special Educational Need and Disabilities Reforms	A further progress report on the affect that the changes have made.	Jeanette Essex Adrian Coles Cllr Kershaw	27th Nov 2014 SB2 meeting	Members to be involved in young people’s shadow board and pre-consultation events
	Adoption Annual	Progress on Adoption Services	Yolanda Corden		

Date	Title	Detail	Cabinet Member/ Lead Officer	Source	Outcomes
	Report		Cllr Ruane		
	Improvement Board Progress Report from 26 August 15 – DfE review report	On-going monitoring of progress against the action plan. To include the numbers of children looked after and those discharged from care and the DfE review report.	Yolanda Corden Cllr Ruane	Council 10/4/14	
8 October 2015	Pupil Premium Uptake – briefing note update	To consider whether the improved communications with schools to encourage parents to apply for the Pupil Premium has been successful.	Ashley Simpson Cllr Kershaw	Meeting 12 th Feb 15	
	Free early year education or childcare funding for 2 year olds – briefing note update	Progress update on uptake of free early years education	Amanda Reynolds, Angela Harley Cllr Kershaw	Meeting 27 th November 2014	
	Quality Assurance – Children’s Placements	To review performance of Children’s Homes that Coventry children are placed in and procedures for what happens if a home is judged inadequate by Ofsted.	Pete Fahey/Sally Giles Cllr Ruane	Chair	
5 November 2015 – to take place at President Kennedy School	Y6-Y7 Transition – President Kennedy Bridge Project	To find out more about how transition from Primary to Secondary schools is supported at President Kennedy.		Meeting 2 July	
	Education progress and school improvement	To look at the attainment of children at Coventry schools from EY to post 16. Also to consider the refreshed improvement strategy and how academies are supported	Kirstin Nelson Anne Brennan Cllr Kershaw	Agenda conference 11/9/15	

Date	Title	Detail	Cabinet Member/ Lead Officer	Source	Outcomes
	Improvement Board Progress Report from 2 October 15	On-going monitoring of progress against the action plan. To include the numbers of children looked after and those discharged from care.	Yolanda Corden Cllr Ruane	Council 10/4/14	
25 November	CAMHS re-modelling – joint with Health and Social Care Board (5)	To look at the proposals for the new structure following the re-modelling exercise. A joint meeting with SB5 and to invite the Chair of Warwickshire health scrutiny board.	Jaqueline Barnes Harpal Sohal Cllr Ruane	Meeting 12 th Feb 15	
Date to be arranged	Serious Case Review – Child S	To review the report of the LSCB to monitor progress on recommendations.	Cat Parker Cllr Ruane		
	LSCB Annual Report	The Annual Report from the Coventry Safeguarding Children’s Board, with progress following the Ofsted inspection. Members requested that the report comes in a timely manner. October/November.	Janet Mokades Cat Parker Cllr Ruane	Meeting 26 March 15	
10 December 2015	Fostering Task and Finish Group Recommendations – progress report	Progress on the recommendations to Cabinet Member for improvement to Fostering Services – to include recruitment and retention information	Jivan Sembi Cllr Ruane	Meeting 26 March 15	
	Fostering Annual Report	Progress on Fostering Services, potentially to combine with T&F recommendations. This report went to the Cabinet Member on 27 July 2015.	Yolanda Corden Cllr Ruane		
	Early Help and the Children and Families First Service (Early Intervention)	To look at what the local authority is doing to deliver services to those families with low level needs to prevent escalation.	Francine Doyle Cllr Ruane		
	Troubled Families	Progress on the Troubled Families	Louison Ricketts		

Date	Title	Detail	Cabinet Member/ Lead Officer	Source	Outcomes
		phase 2	Cllr Ruane		
	Adult Education	To consider progress on increasing Enrolment levels in to most 30% most deprived areas of the city and to see whether action to address the drop in Sept 14 has been successful. Also to look at the expansion of services into parts of Warwickshire.	Lynne Amery Cllr Kershaw	Meeting 12 th Feb 15 and informal meeting 18/6/15	
	Improvement Board Progress Report from 18 November 15	On-going monitoring of progress against the action plan. To include the numbers of children looked after and those discharged from care. To include contribution from Claire Burgess an advisor to the DfE	Yolanda Corden Cllr Ruane	Council 10/4/14	
7 January 2016	Evaluation of the Multi-Agency Safeguarding Hub including a visit	Feedback on the findings of the evaluation of the implementation of the Multi- Agency Safeguarding Hub – ensure links with Scrutiny Co-ordination Committee and CSE.	Yolanda Corden Cllr Ruane	May 2014 discussion with Service leads	
	Education progress focussing on underachieving groups	To look at the attainment of children at Coventry schools who are risk of underachievement including LAC and Roma children.	Kirston Nelson Cllr Kershaw		
	School Place Planning	To look at allocation of school places, and also how the Council plan for the sufficiency of school places.	Ashley Simpson Cllr Kershaw	Agenda conference 11/9/15	
	Appointment of Local Authority Governors	To consider recommendations for a policy on the appointment of elected members to governing bodies.	Cllr Kershaw	Meeting 2 July 2015	
25 February 2016					
	Improvement Board	On-going monitoring of progress	Yolanda Corden	Council	

Date	Title	Detail	Cabinet Member/ Lead Officer	Source	Outcomes
	Progress Report from 6 January 16	against the action plan. To include the numbers of children looked after and those discharged from care.	Cllr Ruane	10/4/14	
17 March 2016					
	Improvement Board Progress Report from 17 February 16	On-going monitoring of progress against the action plan. To include the numbers of children looked after and those discharged from care.	Yolanda Corden Cllr Ruane	Council 10/4/14	
14 April 2016					
	Improvement Board Progress Report from 30 March 16	On-going monitoring of progress against the action plan. To include the numbers of children looked after and those discharged from care.	Yolanda Corden Cllr Ruane	Council 10/4/14	
Date to be decided	Preparation for Leaving Care	The Voice of the Child Task and Finish Group raised the issue of independence training and the Chair suggested that it be looked at separately. To include input from foster carers and care leavers as well as Route 21	Yolanda Corden Cllr Ruane	End of Year Review 3rd April 2014	
	Teen pregnancy and PSHE in schools	To consider what schools are doing to support the Teenage Pregnancy Strategy and how the Council is supporting them	Kirston Nelson, Nadia Ingliss Judith Simmonds		
	Barnardo's project – children missing from care	To look in more detail at this commissioned project.	Yolanda Corden Cllr Ruane	Meeting 12 th Feb 15	
	Voices of Care	To receive an update on activity by the Voice of Care council for Looked After Children at an additional meeting for the VOC to identify.	Sheila Bates Cllr Ruane		

Date	Title	Detail	Cabinet Member/ Lead Officer	Source	Outcomes
	Consultation on proposed changes to the school transport service.	Following the change in timescales to implementation of changes Members requested that the Board considers the new proposals as part of the new consultation process.	Isabel Merrifield Cllr Kershaw	Meeting 23 April 15	
	Youth Offending Service	An update on progress of the Youth Offending Service	Angie Parks Cllr Kershaw	Meeting 23 April 15	
	Appointment of Local Authority Governors	To consider recommendations for a policy on the appointment of elected members to governing bodies	Cllr Kershaw	Meeting 2 July 2015	
	Children's Social Care Workforce Strategy	To consider the workforce strategy for the social care workforce and to review the impact the position of Principal Social Work has had on the social work workforce. A task and finish group to look at performance management for social care workforce.	Vicky White Yolanda Corden Cllr Ruane	Informal meeting 18/6/15	
	Changes to the Library Service	With the proposed cuts to library provision, Members would like to know more about how these changes will be consulted on and implemented. Meeting to take place at the Central Library.	Kirston Nelson Peter Barnett Cllr Kershaw	Meeting 23 April 15	
Performance Monitoring					
	Serious Case Reviews	SB2 can request progress on action plans following serious case reviews.	Cllr Ruane		
	Children's Centres Performance				